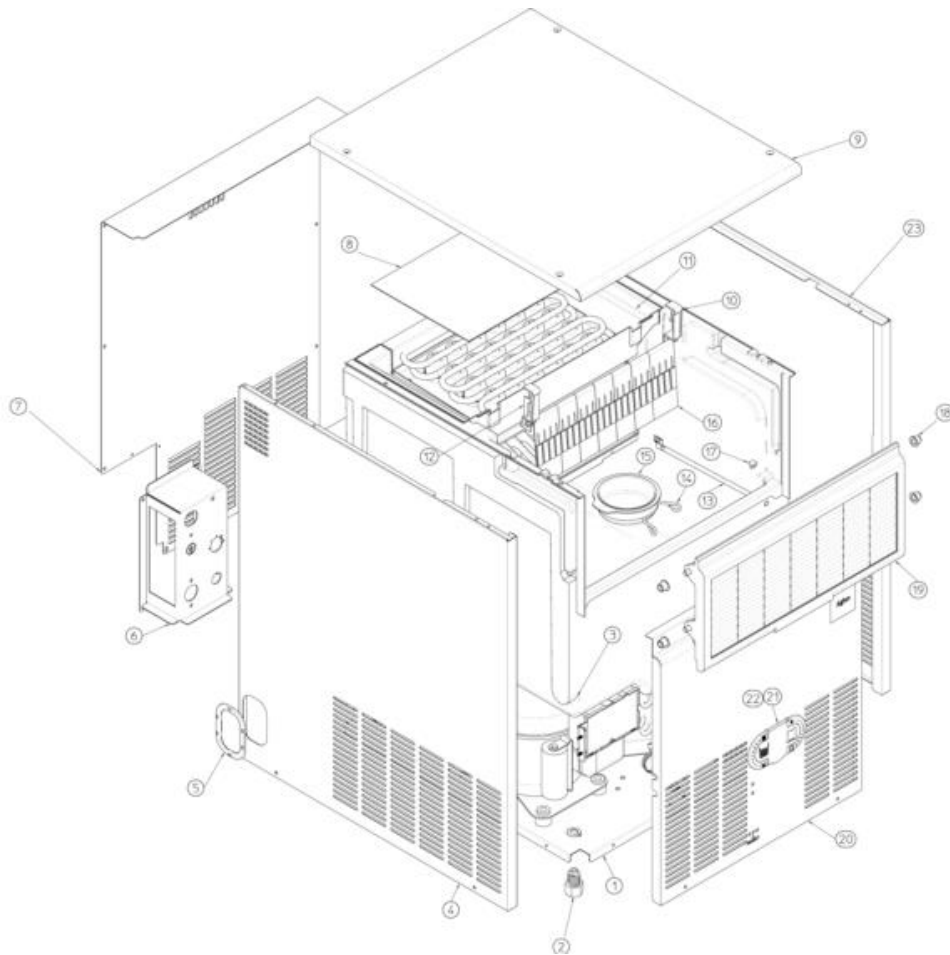
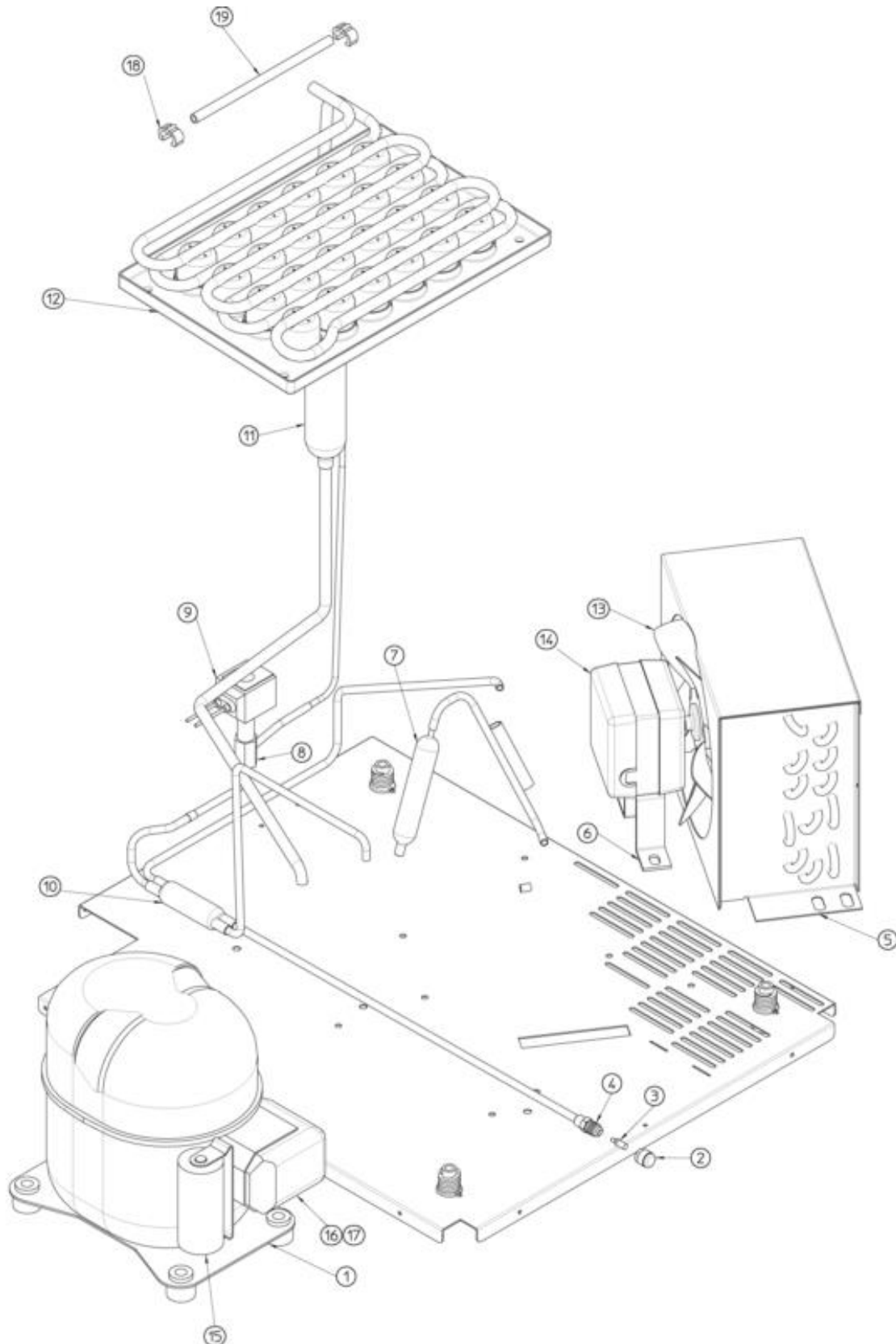


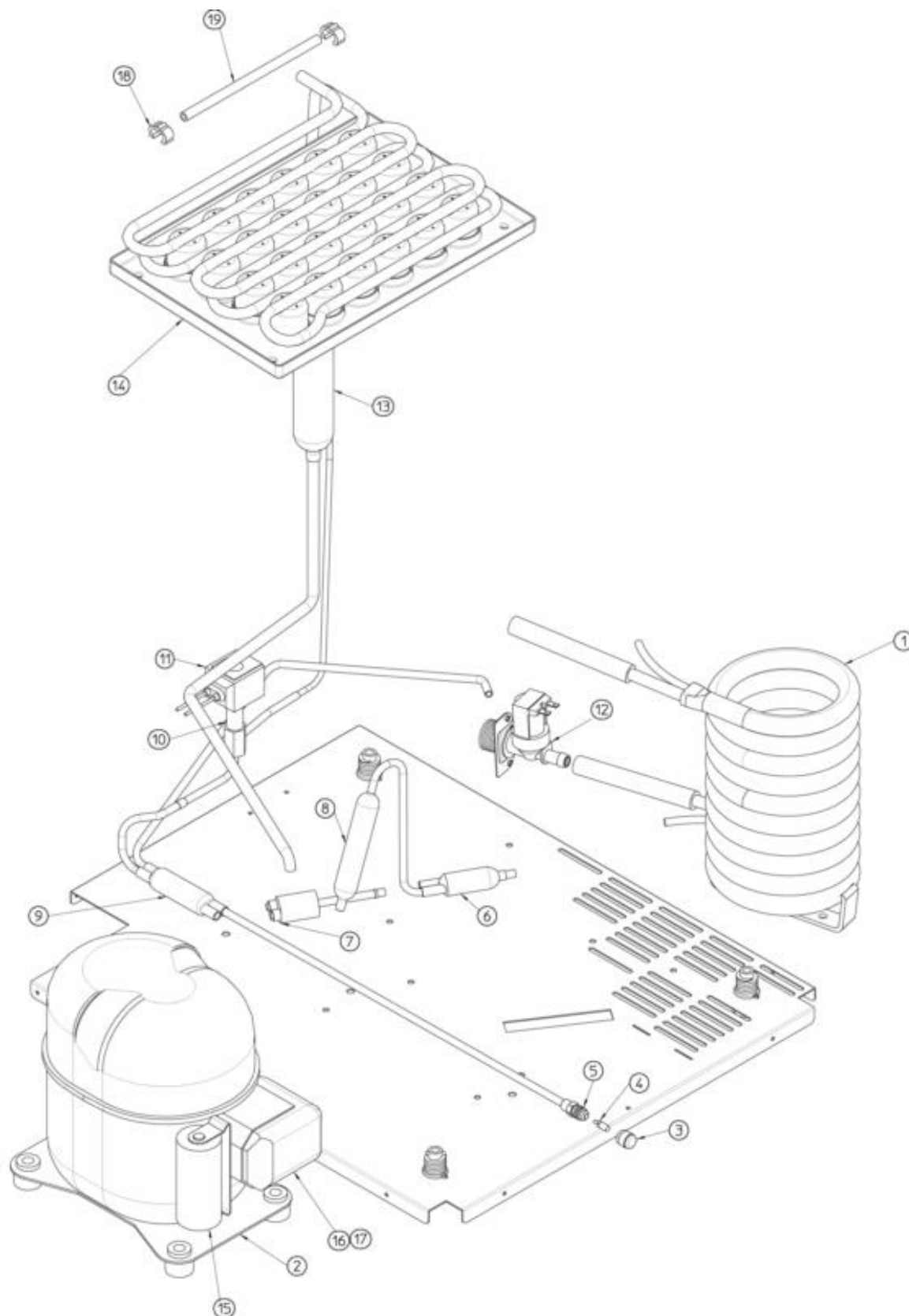
- 
- 1 UNIT PANELS
  - 2 REFRIGERANT SYSTEM – AIR COOLED
  - 3 REFRIGERANT SYSTEM – WATER COOLED
  - 4 WATER SYSTEM
  - 5 WATER SYSTEM – LARGE CUBES
  - 6 CONTROL BOX



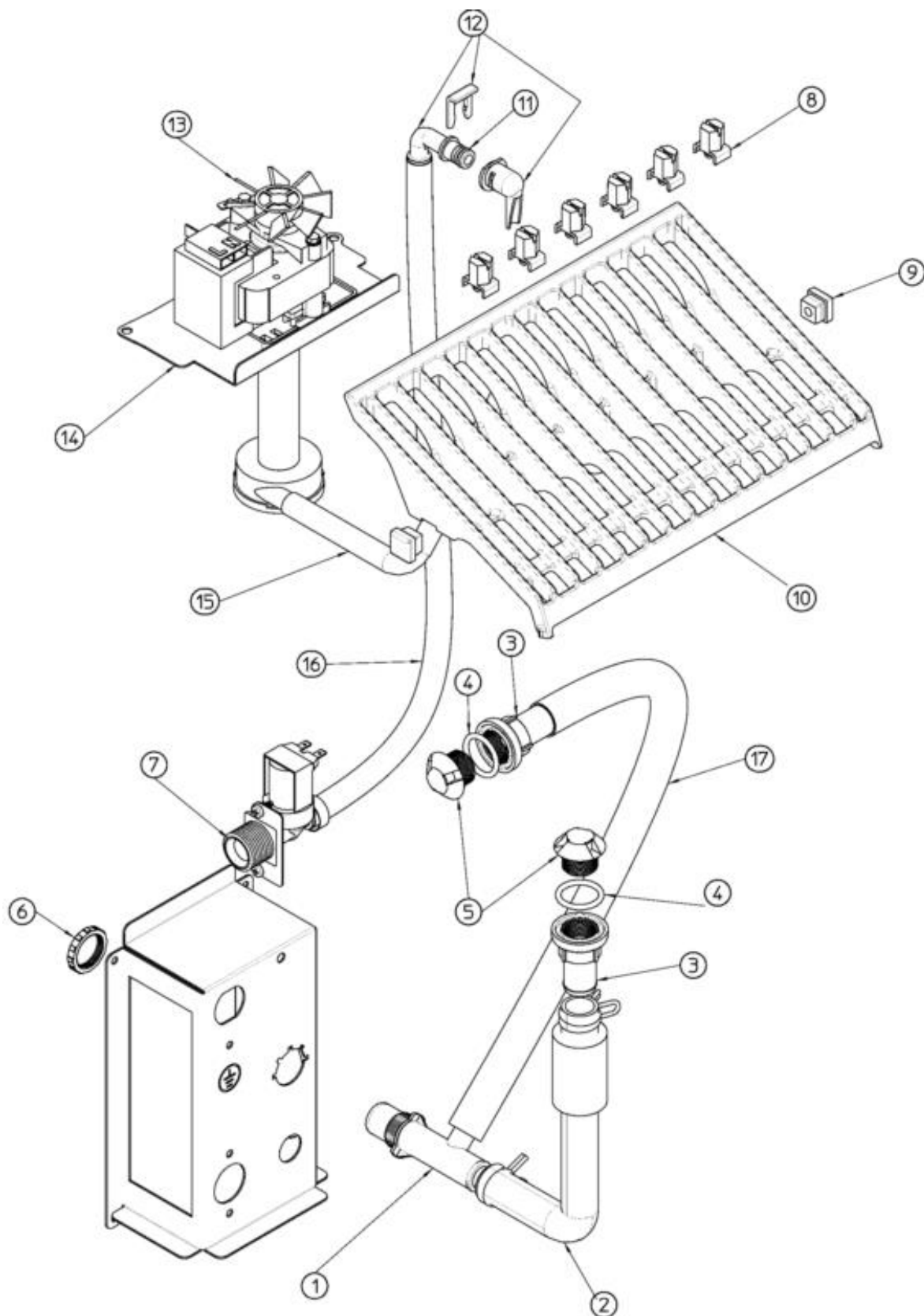
| Pos  | Code       | Description                 |
|------|------------|-----------------------------|
| 0001 | 702673 00  | UNIT BASE                   |
| 0002 | 650382 01  | LEG                         |
| 0003 | 782119 00R | STORAGE BIN ASSY            |
| 0004 | 722573 00  | LEFT SIDE PANEL             |
| 0005 | 661070 00  | PLASTIC PROTECTION          |
| 0006 | 702705 00  | WATER HOOK UP PANEL         |
| 0007 | 702674 00  | REAR PANEL                  |
| 0008 | 742033 04  | EVAPORATOR COVER            |
| 0009 | 781536 03R | TOP PANEL ASSY              |
| 0010 | 660388 01  | CURTAIN BRACKET (LEFT)      |
| 0011 | 660750 07  | EVAPORATOR HOUSING          |
| 0012 | 660388 00  | CURTAIN BRACKET (RIGHT)     |
| 0013 | 732017 02  | BULB HOLDER                 |
| 0014 | 460047 00  | SPRING                      |
| 0015 | 660741 00  | PLASTIC PLUG                |
| 0016 | 784457 06R | CURTAIN ASSY                |
| 0017 | 660816 00  | SHOCK ABSORBER              |
| 0018 | 660286 00  | BUSHING                     |
| 0019 | 782102 40R | BIN DOOR ASSY               |
| 0020 | 722574 00  | FRONT PANEL                 |
| 0021 | 661092 00  | THERMOSTATS PLASTIC HOUSING |
| 0022 | 661092 02  | THERMOSTATS PLASTIC COVER   |
| 0023 | 722572 00  | RIGHT SIDE PANEL            |



| Pos  | Code        | Description           |
|------|-------------|-----------------------|
| 0001 | 670100 17   | COMPRESSOR            |
| 0002 | 650106 00   | CAP                   |
| 0003 | 670012 00   | VALVE CORE            |
| 0004 | 650109 00   | VALVE BODY            |
| 0005 | 620544 00   | AIR COOLED CONDENSER  |
| 0006 | 620419 61   | FAN MOTOR BRACKET     |
| 0007 | 630003 05   | DRIER                 |
| 0008 | 620306 27   | HOT GAS VALVE BODY    |
| 0009 | 620306 48   | COIL - 230/50-60      |
| 0010 | 630137 00   | MECHANICAL FILTER     |
| 0011 | 784444 23   | SUCTION LINE ASSY     |
| 0012 | 784615 01   | EVAPORATOR ASSY       |
| 0013 | 620419 39   | FAN BLADE             |
| 0014 | 620419 02   | FAN MOTOR - 230/50-60 |
| 0015 | EMB 2252347 | CAPACITOR - 230/50/1  |
| 0016 | CUB 405172  | RELAY - 230/50/1      |
| 0017 | CUB 102186  | RELAY                 |
| 0018 | 660386 00   | PLASTIC CLIP          |
| 0019 | 741114 01R  | BULB HOLDER           |

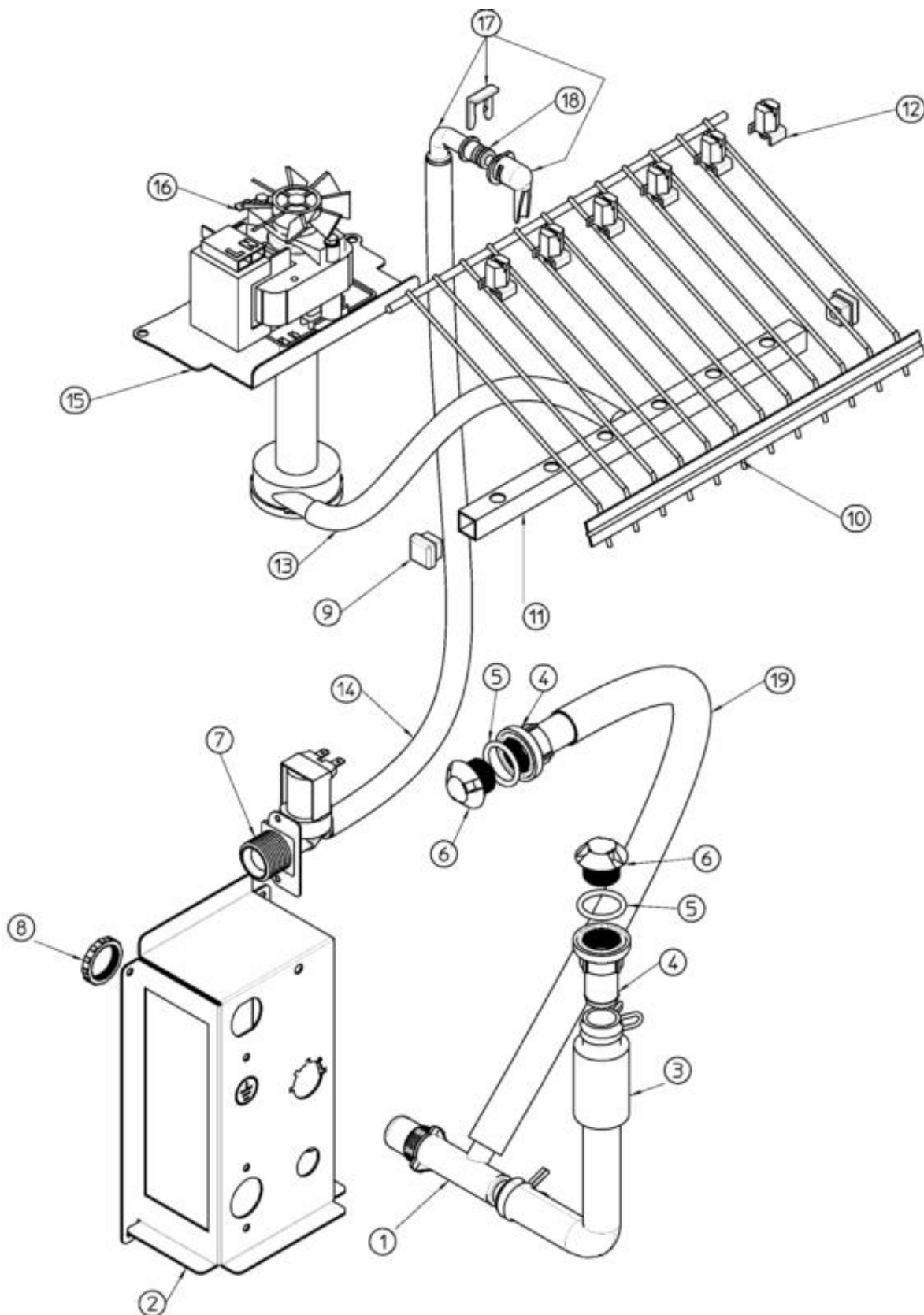


| Pos  | Code        | Description                         |
|------|-------------|-------------------------------------|
| 0001 | 620389 00   | CONDENSER                           |
| 0002 | 670100 17   | COMPRESSOR                          |
| 0003 | 650106 00   | CAP                                 |
| 0004 | 670012 00   | VALVE CORE                          |
| 0005 | 650109 00   | VALVE BODY                          |
| 0006 | 630020 01   | STRAINER                            |
| 0007 | 620499 03   | PRESSOSTAT                          |
| 0008 | 630003 05   | DRIER                               |
| 0009 | 630137 00   | MECHANICAL FILTER                   |
| 0010 | 620306 27   | HOT GAS VALVE BODY                  |
| 0011 | 620306 48   | COIL - 230/50-60                    |
| 0012 | 650105 65   | WATER INLET VALVE ASSY - AIR COOLED |
| 0013 | 784444 23   | SUCTION LINE ASSY                   |
| 0014 | 784615 01   | EVAPORATOR ASSY                     |
| 0015 | EMB 2252347 | CAPACITOR - 230/50/1                |
| 0016 | CUB 405172  | RELAY - 230/50/1                    |
| 0017 | CUB 102186  | RELAY                               |
| 0018 | 660386 00   | PLASTIC CLIP                        |
| 0019 | 741114 01R  | BULB HOLDER                         |

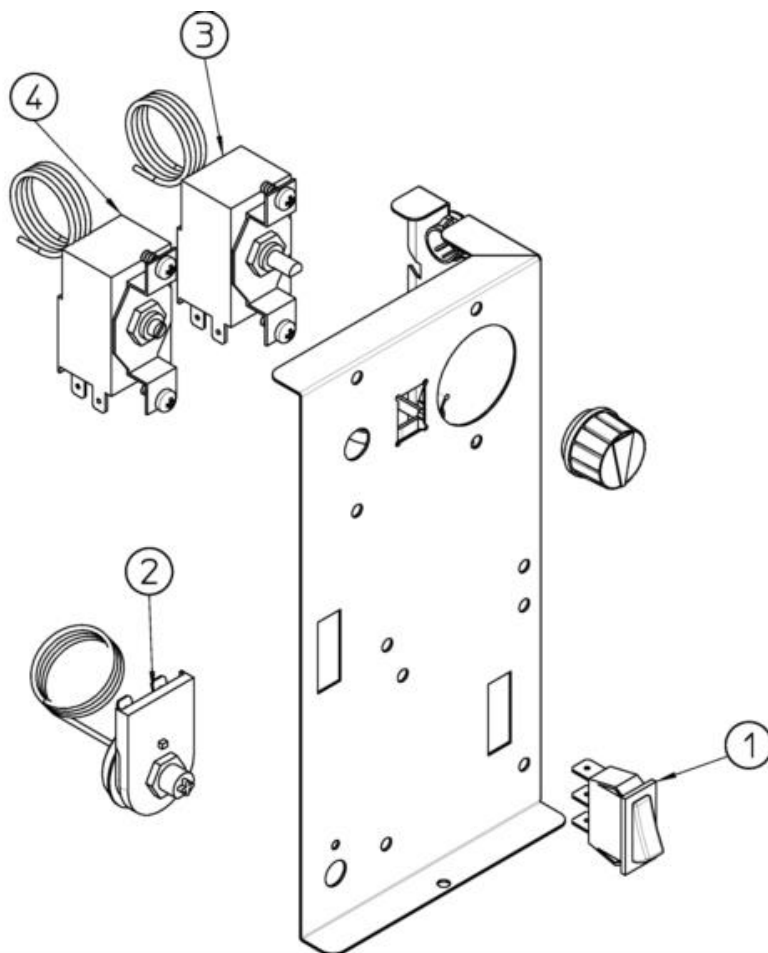




| Pos  | Code       | Description                         |
|------|------------|-------------------------------------|
| 0001 | 660224 00  | TEE TUBE                            |
| 0001 | 660993 00  | WATER DRAIN FITTING – WATER COOLED  |
| 0002 | 610148 10  | TUBE                                |
| 0003 | 660219 02  | BIN DRAIN                           |
| 0004 | 640134 00  | O RING 4093                         |
| 0005 | 660211 01  | DRAIN FILTER                        |
| 0006 | 660535 00  | PLASTIC NUT                         |
| 0007 | 650105 65  | WATER INLET VALVE ASSY - AIR COOLED |
| 0008 | 660558 00  | SPRAY NOZZLE                        |
| 0009 | 660557 00  | SPRAY CUP                           |
| 0010 | 661082 00  | SPRAY BAR & CHUTE                   |
| 0011 | 640041 31  | O RING                              |
| 0012 | 793172 00R | WATER INLET ELBOW ASSY              |
| 0013 | 620423 00  | WATER PUMP - 230/50/1               |
| 0014 | 724485 00  | METAL BRACKET                       |
| 0015 | 610204 01  | TUBE                                |
| 0016 | 281900 01  | TUBE 16X10                          |
| 0017 | 610204 00  | TUBE                                |



| Pos  | Code       | Description                         |
|------|------------|-------------------------------------|
| 0001 | 660224 00  | TEE TUBE                            |
| 0001 | 660993 00  | WATER DRAIN FITTING – WATER COOLED  |
| 0002 | 702705 00  | WATER HOOK UP PANEL                 |
| 0003 | 610148 10  | TUBE                                |
| 0004 | 660219 02  | BIN DRAIN                           |
| 0005 | 640134 00  | O RING 4093                         |
| 0006 | 660211 01  | DRAIN FILTER                        |
| 0007 | 650105 65  | WATER INLET VALVE ASSY - AIR COOLED |
| 0008 | 660535 00  | PLASTIC NUT                         |
| 0009 | 660557 00  | SPRAY CUP                           |
| 0012 | 660558 00  | SPRAY NOZZLE                        |
| 0013 | 610204 01  | TUBE                                |
| 0014 | 281900 01  | TUBE 16X10                          |
| 0015 | 724485 00  | METAL BRACKET                       |
| 0016 | 620423 00  | WATER PUMP - 230/50/1               |
| 0017 | 793172 00R | WATER INLET ELBOW ASSY              |
| 0018 | 640041 31  | O RING                              |
| 0019 | 610204 00  | TUBE                                |



| Pos  | Code      | Description      |
|------|-----------|------------------|
| 0001 | 620442 01 | SWITCH           |
| 0002 | 620443 02 | THERMOSTAT       |
| 0003 | 620264 06 | KNOB             |
| 0003 | 620264 16 | EVAP. THERMOSTAT |
| 0004 | 630005 00 | BIN THERMOSTAT   |